

iPLORE+



FROM Ø 2.4 MM TO 6 M PROBE LENGTH



iPLORE+

5 INCH LCD SCREEN

See the inside of your application directly on our LCD screen with a resolution of 1280 x 720 pixels. Start the menu and edit settings via direct access buttons.

DIRECT ACCESS BUTTONS

Change lightning and zoom factor, store photo and video files or edit the basic settings via direct access buttons.

KEY FEATURES OF THE VIDEOSCOPE



MULTIPLE CONNECTIONS

Several video outputs:

- ⌘ Digital HDMI
- ⌘ Composite analog
- ⌘ Mini USB 2.0

Photo / video storage:

- ⌘ SD card up to 32 GB

PRECISE AND SENSITIVE JOYSTICK

The joystick is ergonomically placed within the reach of your thumb, no matter which hand you are using to operate the videoscope.

INTERCHANGEABLE PROBES

Changing probes has never been easier: insert the probe you want to use into the hole on the back of the base unit and turn it clockwise. Turn it counterclockwise to remove it. It's as simple as that !

iPLORE+



GAIN IN PERFORMANCE...

A SENSITIVE ARTICULATION

The ultra-sensitive mechanical articulation of the probe allows you to move the probe tip in any direction so that no detail is missed during your visual inspection. The videoscope is designed so that the joystick is always within the reach of your thumb. This way, you can use the videoscope for a long time without getting tired.

ESSENTIAL FUNCTIONS

During an endoscopic check, good illumination is essential. But it is just as important to be able to adjust the lighting to the situation in order not to miss any detail. The high definition and the white balance provide an authentically rendered inspection image and allow you to save high quality photo and video files. In addition, a special feature allows you to superimpose a test pattern on your live image which enables you to easier detect defects or foreign objects in your application.

... AND IN ERGONOMICS!

IMPROVED ERGONOMICS

During visual inspections, inspecting engineers have to face different kinds of obstacles: uncomfortable position, insufficient illumination, occupied hands, etc. This is why we want to offer you a videoscope that will improve your working conditions. Thanks to the LED on the back of the iPLORE + endoscope you can illuminate your application. Furthermore, you can put the videoscope on the base or attach it to the shoulder strap, so that your hands are free and you can work in a more comfortable position.

CHANGE YOUR PROBE IN NO TIME

Thanks to the uncomplicated connection system of the iPLORE +, changing probes is easier than ever. We offer a range of video probes with different diameters and lengths that are perfectly suited to non-destructive testing in the aeronautics, automotive, wind and foundry sectors. In addition, the standardized light system allows you to easily detect defects and foreign objects.





HIGH QUALITY COMPONENTS

THE IMPORTANCE OF MATERIALS

In order to achieve a long lifetime of your video probe, it is very important for us that only top quality material is used. That's why the main materials used for the iPLORE + probes are the following :

- ▄ an ultra-resistant titanium alloy head
- ▄ a distal sapphire cover glass that will prevent micro scratches
- ▄ a tungsten probe sheath that provides unmatched abrasion resistance



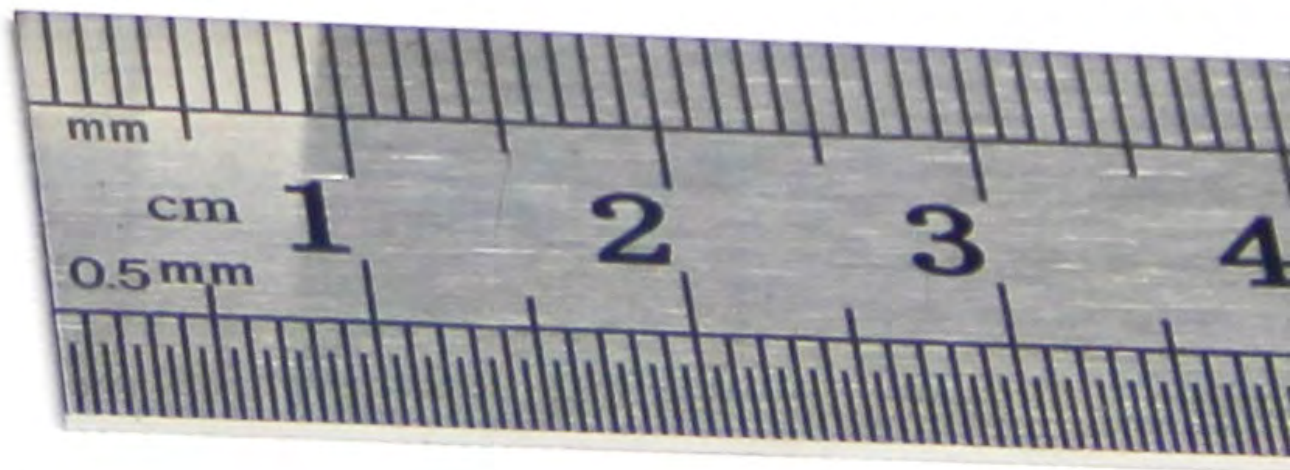
A RESISTANT PROBE

THE SMALLEST ARTICULABLE VIDEOSCOPE IN THE WORLD

OUTSTANDING ARTICULATION

Our thinnest probe has a diameter of 2.4 mm. This probe has been specially developed to respond to extreme inspections. Now you are able to inspect areas that have so far been inaccessible due to their small size.

Beside the often used 6 mm HD probe, it is also useful to have a very small diameter articulations probe in order to quickly inspect smaller applications.



A Ø 6 MM PROBE WITH A 1 MEGAPIXEL RESOLUTION

THE IMPORTANCE OF IMAGE RESOLUTION

The widest probe in the iPLORE + range will offer you exceptional image quality thanks to its high definition resolution of 1 million pixels. It is always very useful to have a probe with a very high resolution like this for inspections that require a very clear image.

INTERCHANGE YOUR PROBES

DIFFERENT PROBE SIZES

FOR ALL TYPES OF APPLICATIONS

We know that applications always differ in their size, their depth or even their geometry, this is why we offer several probes.

Concerning the diameters, we have probes of Ø :

- ⌘ 2.4 mm
- ⌘ 3.9 mm
- ⌘ 6.4 mm
- ⌘ 8.4 mm

and regarding the lengths we can provide you with :

- ⌘ 1.5 m
- ⌘ 2.0 m
- ⌘ 3.5 m
- ⌘ 6.0 m

☎ Please contact us for any others lengths.



VERY COST-SAVING SOLUTION

ONE BASE UNIT - SEVERAL PROBES

Videoscopes with interchangeable probes are by definition the most economical solution for inspections that require different video probes. Indeed, purchasing an additional probe to your existing iPLORE + videoscope will save you up to 40%.

PERFECTLY ADAPTED TRANSPORT CASE

EASY TRANSPORT AND STORAGE

There is a slot for each element integrated into this robust tailor-made transport case which was specially designed for the iPLORE + with its interchangeable probes. Ultra light and compact, the suitcase is resistant and optimized for transport and storage. You will find a space for:

- ❖ Control handle
- ❖ Two interchangeable probes
- ❖ Endoscope stand
- ❖ Storage for up to two batteries
- ❖ Power supply
- ❖ Cleaning kit
- ❖ Manual
- ❖ 32 GB SD card



GREAT AUTONOMY

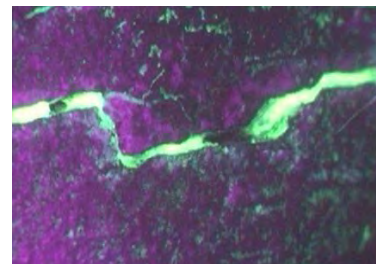
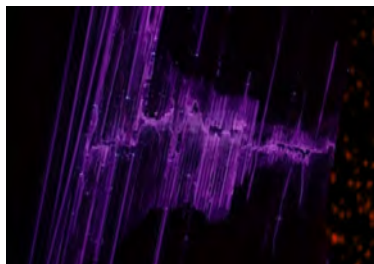
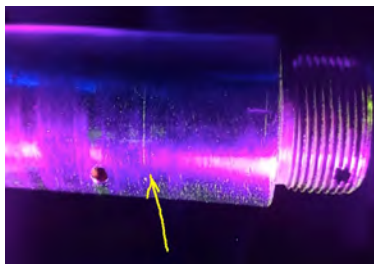
INSPECT FOR 4H

Mobility is a very important factor in visual inspection, but in order to achieve it you need a very enduring videoscope. Thanks to its powerful batteries, it is possible to inspect up to 4 hours without the need of an additional power supply. This makes the iPLORE + a real pioneer of video endoscopes.

A WIDE RANGE OF SOLUTIONS

PROBES WITH UV TECHNOLOGY

DYE PENETRANT INSPECTION



In non-destructive testing, fluorescence makes it possible to observe the surface to be inspected. Ultraviolet light reveals micro-defects that are not visible to the naked eye such as micro-cracks (cracks) in an aircraft engine. Penetrant testing allows fluorescence to be used over large areas to be inspected over a wavelength of 365 nm ideal for large cylinders, landing gear components and many other applications. Our UV probes are ideal for controlling all types of turbine blades, aircraft engines, aircraft control, piping, combustion chambers and can also be perfectly used in more military-oriented applications.

PROBES WITH INFRARED TECHNOLOGY

INFRARED INSPECTION



Our interchangeable infrared probes are specially designed to see without being seen. Security Forces such as the police, the military and building security. The latter may have to use these probes to detect the presence of intruders on a site. Police generally use these types of products to inspect boxes that they suspect may be used as a benchmark to hide illicit things. In fact, they can therefore control the interior of these boxes in order to look at cars, serial numbers, dangerous objects and many other things objectionable by law.

TECHNICAL DATA

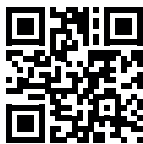
iPLORE+



PROBE	PROBE 2.4	PROBE 3.9	PROBE 6.4	PROBE 8.4
CAMERA				
Diameter in mm	2.4	3.9	6.4	8.4
Image sensor	CMOS 1/18	CMOS 1/9	CMOS 1/6	CMOS 1/6
Pixels	160 000 px	1 million px (720p)	1 million px (720p)	1 million px (720p)
Field of view (FOV)	> 120°	> 120°	> 120°	> 120°
Depth of view (DOV)	5 mm - 30 mm	8 mm - 80 mm	8 mm - 80 mm	8 mm - 80 mm
Illumination brightness	5000 lux	18 000 lux	50 000 lux	70 000 lux
PROBE				
Material of the probe	Titanium alloy head Flexible stainless steel sheath	Titanium alloy head Flexible stainless steel sheath	Titanium alloy head Flexible stainless steel sheath	Titanium alloy head Flexible stainless steel sheath
Diameter in mm	2.4	3.9	6	8.4
Length	1.5	2 3.5	2 3.5	2 3.5 6
Articulation	manual joystick 2-axes	manual joystick 4-axes		
Watertightness	IP 67			
HANDLE				
Weight in kg	1.07			
Screen size	5"			
Resolution	1280 * 720			
Interchangeability	Yes			
Connections	HDMI Mini USB NTSC			
FEATURES				
Image processing	White balance (auto / manual), contrast, image rotation, test pattern, text input, rename or delete photos, zoom, etc.			
Memory	On 32 GB SD card			
Photo / video format	JPEG 1024*768 (4:3) / 1200*720 (16:9) MOV 1200*720 (4:3) / 920*720 (16:9)			
Battery life	> 4 hours			
Loading time	≈ 5 hours			
Operating temperature	-10°C to +50°C			
Live transfert	Live display on external tablet of smartphone (Android or iOS via WiFi)			
Transfert	Via SD card supplied on delivery or via MiniUSB			

WARNING ! Do not use for medical purposes. Never use near electrical installations or in hazardous or explosive environments. AMERICAN or EUROPEAN patents can apply to all products.

© Copyright, viZaar industrial imaging SA. Illustrations may differ from the original product. Subject to technical modifications and errors. All rights reserved.



FURTHER
INFORMATION

iPLORE+

www.vizaar.fr



viZaar industrial imaging AG
Headquarter
Hechinger Straße 152
72461 Albstadt / Germany
Tel.: +49 7432 98375-0
Fax: +49 7432 98375-50
FreeCall 0800 3600371 (only within Germany)
info@vizaar.com

viZaar industrial imaging AG
VT Service / Rental Service / Sales / Training Center
Lupusstraße 17
35789 Weilmünster-Wolfenhausen / Germany
Tel.: +49 6475 91129-0
Fax: +49 6475 91129-29

viZaar NRW
Sales and Service Office
46348 Raesfeld / Germany
Tel.: +49 170 5703130

viZaar North
Sales and Service Office
25361 Krempe / Germany
Tel.: +49 171 5524094

viZaar South
Sales and Service Office
88171 Weiler-Simmerberg / Germany
Tel.: +49 172 6019601



viZaar industrial imaging SA
3 rue Lambert
Parc Lavoisier
91410 Dourdan / France
Tel.: +33 1608 11818
Fax: +33 1645 99573
www.vizaar.fr
info@vizaar.fr

viZaar authorized distributor



viZaar Russia & CIS
197022, St. Petersburg / Russia
Professorova Popova 37B
Tel.: +7 9852220677
www.vizaar.ru
info@vizaar.ru



viZaar South-East Asia Sdn. Bhd.
2A Lrg Desa Utama Jln Masjid Kayu
Ara PJU 6
47400 Petaling Jaya Selangor / Malaysia
Tel.: +603 772 217-10
Fax: +603 772 217-10
www.vizaarsea.com.my
info@vizaarsea.com.my